

08:33

SAN FRANCISCO

10:33

HOUSTON

11:33

WASHINGTON, DC

16:33

LONDON

17:33

FRANKFURT

21:03

AFGHANISTAN

01:33

JAPAN

BTZ-42440-7ERG

NUMBER OF ZONES

ELECTRONIC LETTERING

TIME COLOR

LOCATION COLOR

SPECIFICATIONS

- TYPE:** ----- 7 segment time 15 character alphanumeric in (Red, Green, Yellow or Blue)
- DISPLAY:** ----- 4-DIGIT, 7 seg. LED time in (Red, Green, or Blue) and 15 LINE 5 by 7 DOT- MATRIX LED
- CHARACTER HEIGHT:** ----- 4" (101.6 mm) Hr / Min 1.5" 15 line location display
- VISIBILITY:** ----- 125 Ft. (38.1 METERS)
- POWER REQUIREMENTS:** -- 100-240V 50~60Hz (12vdc SWITCHING POWER SUPPLY).
- FRAME:** ----- ALUMINUM (BLACK ANODIZED FINISH)
- DIMENSIONS:** ----- 10.25" x 67.75" x 1.38" and 10.25" x 50.75" x 1.38" **TWO PART.**
- WEIGHT:** ----- 23.25 lbs.
- OPERATING TEMP.:** ----- -17° TO 190° F
- HUMIDITY:** ----- 0% TO 95% NON-CONDENSING
- OPERATING MODE:** ----- 27 DAYLIGHT SAVINGS, 31 TIME ZONES, 10yr BACKUP WITH 1sec A YEAR ACCURACY, NON-GLARE LENS, EYELET AND SAW TOOTH SURFACE MOUNT, PC INTERFACE WITH DDS TimeNet 2.0 SOFTWARE.

ALL CLOCKS USE THE DALLAS DS32 SERIES RTC PARTS, AND OUR FIRMWARE CONTROL, TO GET THE ONE SEC A YEAR ACCURACY.



1 SEC A YEAR ACCURATE (TCXO)



- 12 OR 24 HOUR FORMAT
- NON GLARE LENS
- SUPER BRIGHT LEDS
- ALUMINUM FRAME

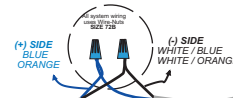
- 10 YEAR LITHIUM BATTERY BACKUP (Standard)
- AUTOMATIC DAY LIGHT CORRECTION (Standard)
- ONE SEC A YEAR ACCURACY (TCXO) (Standard)

The PC is used to set the Locations and Time. The Clock can run on its own without the PC after setting. NOTE: The colones flashing on zone 1 when it is not running on the PC.



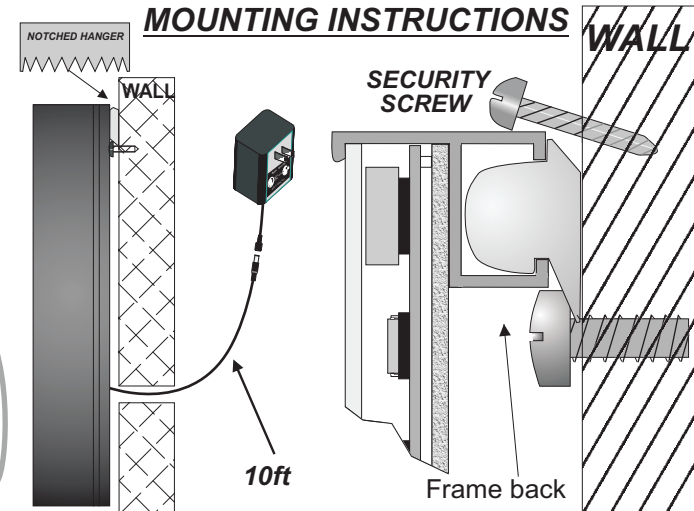
RS-232 IF NOT OVER 100ft

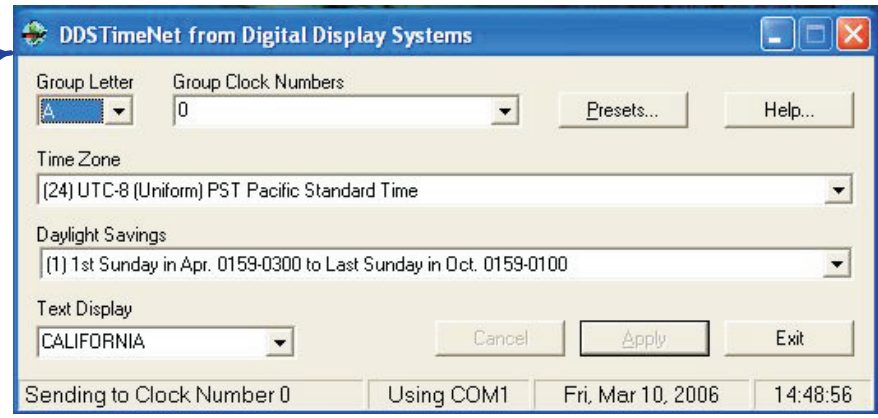
RS-232 SERIAL PORT DB9 CONNECTOR SUPPLIED



PC COMMUNICATIONS

MOUNTING INSTRUCTIONS





DB9 CONNECTOR SUPPLIED

RS-232 NOT OVER 100ft

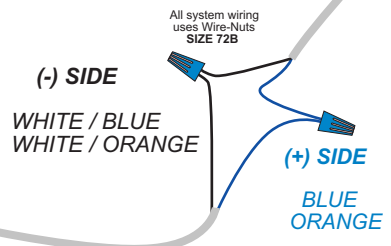
ALL CLOCKS USE THE DALLAS DS32 SERIES RTC PARTS, AND OUR FIRMWARE CONTROL, TO GET THE ONE SEC A YEAR ACCURACY. **1 SEC A YEAR ACCURATE (TCXO)**



World's Most Accurate RTC

WHEN ON THE PC THE PC TIME IS UP DATING THE TIME ON THE TIME ZONE CLOCK. WHEN THE TIME ZONE IS OFF THE PC, THE MASTER ZONE (0) IS UPDATING THE TIME ZONES.

The PC is used to set the Locations and Time. The Clock can run on its own without the PC after setting. NOTE: The colones flash on the zone 0 when it is not running on the PC.



GROUP CLOCK NUMBERS

